

Inspiron 13

7000 Series

Service Manual

Computer Model: Inspiron 13—7352
Regulatory Model: P57G
Regulatory Type: P57G001



Notes, Cautions, and Warnings



NOTE: A NOTE indicates important information that helps you make better use of your computer.



CAUTION: A CAUTION indicates either potential damage to hardware or loss of data and tells you how to avoid the problem.



WARNING: A WARNING indicates a potential for property damage, personal injury, or death.

Copyright © 2015 Dell Inc. All rights reserved. This product is protected by U.S. and international copyright and intellectual property laws. Dell™ and the Dell logo are trademarks of Dell Inc. in the United States and/or other jurisdictions. All other marks and names mentioned herein may be trademarks of their respective companies.

2015 - 01

Rev. A00

Contents

Before working inside your computer.....	10
Before you begin	10
Safety instructions.....	10
Recommended tools.....	11
After working inside your computer.....	12
Removing the base cover.....	13
Procedure.....	13
Replacing the base cover.....	15
Procedure.....	15
Removing the battery.....	16
Prerequisites.....	16
Procedure.....	16
Replacing the battery.....	18
Procedure.....	18
Post-requisites.....	18
Removing the memory module.....	19
Prerequisites.....	19
Procedure.....	19
Replacing the memory module.....	21
Procedure.....	21
Post-requisites.....	22



Removing the hard drive.....	23
Prerequisites.....	23
Procedure.....	23
Replacing the hard drive.....	26
Procedure.....	26
Post-requisites.....	26
Removing the coin-cell battery.....	27
Prerequisites.....	27
Procedure.....	27
Replacing the coin-cell battery.....	29
Procedure.....	29
Post-requisites.....	29
Removing the wireless card.....	30
Prerequisites.....	30
Procedure.....	30
Replacing the wireless card.....	32
Procedure.....	32
Post-requisites.....	32
Removing the keyboard daughter-board.....	33
Prerequisites.....	33
Procedure.....	33
Replacing the keyboard daughter-board.....	35
Procedure.....	35
Post-requisites.....	35



- Removing the power and volume-buttons board.....36**
 - Prerequisites..... 36
 - Procedure..... 36

- Replacing the power and volume-buttons board..... 39**
 - Procedure..... 39
 - Post-requisites.....39

- Removing the speakers.....40**
 - Prerequisites..... 40
 - Procedure..... 40

- Replacing the speakers..... 43**
 - Procedure..... 43
 - Post-requisites..... 43

- Removing the touch pad..... 44**
 - Prerequisites..... 44
 - Procedure..... 45

- Replacing the touch pad..... 48**
 - Procedure..... 48
 - Post-requisites..... 48

- Removing the fan..... 49**
 - Prerequisites..... 49
 - Procedure..... 49

- Replacing the fan.....52**
 - Procedure..... 52
 - Post-requisites.....52



Removing the heat sink.....	53
Prerequisites.....	53
Procedure.....	53
Replacing the heat sink.....	55
Procedure.....	55
Post-requisites.....	55
Removing the I/O board.....	56
Prerequisites.....	56
Procedure.....	56
Replacing the I/O board.....	58
Procedure.....	58
Post-requisites.....	58
Removing the power-adaptor port.....	59
Prerequisites.....	59
Procedure.....	59
Replacing the power-adaptor port.....	61
Procedure.....	61
Post-requisites.....	61
Removing the system board.....	62
Prerequisites.....	62
Procedure.....	62
Replacing the system board.....	66
Procedure.....	66
Post-requisites.....	67
Entering the Service Tag in the BIOS.....	67



Removing the display assembly.....	68
Prerequisites.....	68
Procedure.....	68
Replacing the display assembly.....	71
Procedure.....	71
Post-requisites.....	71
Removing the computer base.....	73
Prerequisites.....	73
Procedure.....	73
Replacing the computer base.....	75
Procedure.....	75
Post-requisites.....	75
Removing the display panel.....	76
Prerequisites.....	76
Procedure.....	77
Replacing the display panel.....	80
Procedure.....	80
Post-requisites.....	80
Removing the display hinges.....	81
Prerequisites.....	81
Procedure.....	81
Replacing the display hinges.....	83
Procedure.....	83
Post-requisites.....	83



Removing the display back-cover and antenna assembly.....	84
Prerequisites.....	84
Procedure.....	84
Replacing the display back-cover and antenna assembly.....	86
Procedure.....	86
Post-requisites.....	86
Removing the camera.....	87
Prerequisites.....	87
Procedure.....	87
Replacing the camera.....	89
Procedure.....	89
Post-requisites.....	89
Removing the Windows-button board.....	90
Prerequisites.....	90
Procedure.....	90
Replacing the Windows-button board.....	92
Procedure.....	92
Post-requisites.....	92
Removing the display cable.....	93
Prerequisites.....	93
Procedure.....	93



Replacing the display cable..... 97
 Procedure..... 97
 Post-requisites..... 97

Flashing the BIOS..... 98

Getting help and contacting Dell..... 99
 Self-help resources..... 99
 Contacting Dell..... 99



Before working inside your computer




CAUTION: To avoid damaging the components and cards, handle them by their edges and avoid touching pins and contacts.



NOTE: The images in this document may differ from your computer depending on the configuration you ordered.

Before you begin

- 1 Save and close all open files and exit all open applications.
- 2 Shut down your computer.
 - Windows 8.1: On the **Start** screen, click or tap the power icon  → **Shut down**.
 - Windows 7: Click or tap **Start** → **Shut down**.



NOTE: If you are using a different operating system, see the documentation of your operating system for shut-down instructions.









- 3 Disconnect your computer and all attached devices from their electrical outlets.
- 4 Disconnect all cables such as telephone cables, network cables and so on, from your computer.
- 5 Disconnect all attached devices and peripherals, such as keyboard, mouse, monitor, and so on, from your computer.
- 6 Remove any media card and optical disc from your computer, if applicable.

Safety instructions

Use the following safety guidelines to protect your computer from potential damage and ensure your personal safety.



WARNING: Before working inside your computer, read the safety information that shipped with your computer. For more safety best practices, see the Regulatory Compliance home page at dell.com/regulatory_compliance.

-  **WARNING:** Disconnect all power sources before opening the computer cover or panels. After you finish working inside the computer, replace all covers, panels, and screws before connecting to the power source.
-  **CAUTION:** To avoid damaging the computer, make sure that the work surface is flat and clean.
-  **CAUTION:** To avoid damaging the components and cards, handle them by their edges and avoid touching pins and contacts.
-  **CAUTION:** You should only perform troubleshooting and repairs as authorized or directed by the Dell technical assistance team. Damage due to servicing that is not authorized by Dell is not covered by your warranty. See the safety instructions that shipped with the product or at dell.com/regulatory_compliance.
-  **CAUTION:** Before touching anything inside your computer, ground yourself by touching an unpainted metal surface, such as the metal at the back of the computer. While you work, periodically touch an unpainted metal surface to dissipate static electricity, which could harm internal components.
-  **CAUTION:** When you disconnect a cable, pull on its connector or on its pull-tab, not on the cable itself. Some cables have connectors with locking tabs or thumb-screws that you must disengage before disconnecting the cable. When disconnecting cables, keep them evenly aligned to avoid bending any connector pins. When connecting cables, make sure that the ports and connectors are correctly oriented and aligned.
-  **CAUTION:** To disconnect a network cable, first unplug the cable from your computer and then unplug the cable from the network device.
-  **CAUTION:** Press and eject any installed card from the media-card reader.

Recommended tools

The procedures in this document may require the following tools:

- Philips screwdriver
- Plastic scribe



After working inside your computer



CAUTION: Leaving stray or loose screws inside your computer may severely damage your computer.

- 1 Replace all screws and make sure that no stray screws remain inside your computer.
- 2 Connect any external devices, peripherals, and cables you removed before working on your computer.
- 3 Replace any media cards, discs, and any other parts that you removed before working on your computer.
- 4 Connect your computer and all attached devices to their electrical outlets.
- 5 Turn on your computer.

Removing the base cover



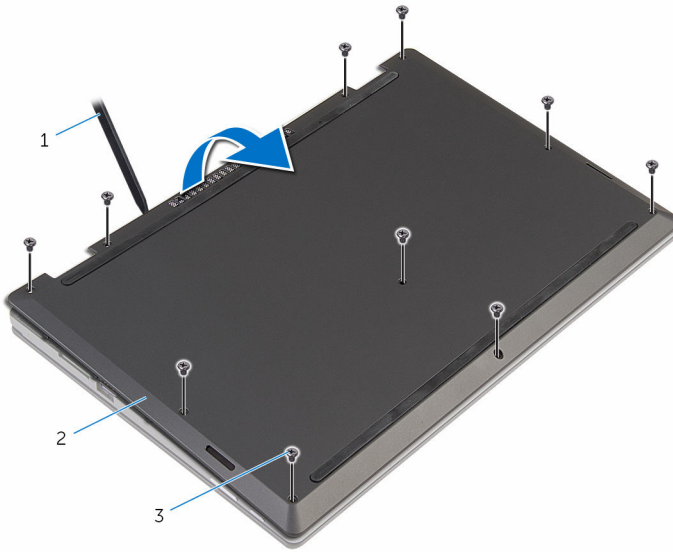
WARNING: Before working inside your computer, read the safety information that shipped with your computer and follow the steps in [Before working inside your computer](#). After working inside your computer, follow the instructions in [After working inside your computer](#). For more safety best practices, see the Regulatory Compliance home page at dell.com/regulatory_compliance.

Procedure

- 1 Close the display and turn the computer over.
- 2 Remove the screws that secure the base cover to the computer base.



3 Using a plastic scribe, pry the base cover off the computer base.



- 1 plastic scribe
- 3 screws (10)

2 base cover

Replacing the base cover



WARNING: Before working inside your computer, read the safety information that shipped with your computer and follow the steps in [Before working inside your computer](#). After working inside your computer, follow the instructions in [After working inside your computer](#). For more safety best practices, see the Regulatory Compliance home page at dell.com/regulatory_compliance.

Procedure

- 1 Slide the tabs on the base cover into the slots on the computer base and snap the base cover into place.
- 2 Replace the screws that secure the base cover to the computer base.



Removing the battery



WARNING: Before working inside your computer, read the safety information that shipped with your computer and follow the steps in [Before working inside your computer](#). After working inside your computer, follow the instructions in [After working inside your computer](#). For more safety best practices, see the Regulatory Compliance home page at dell.com/regulatory_compliance.

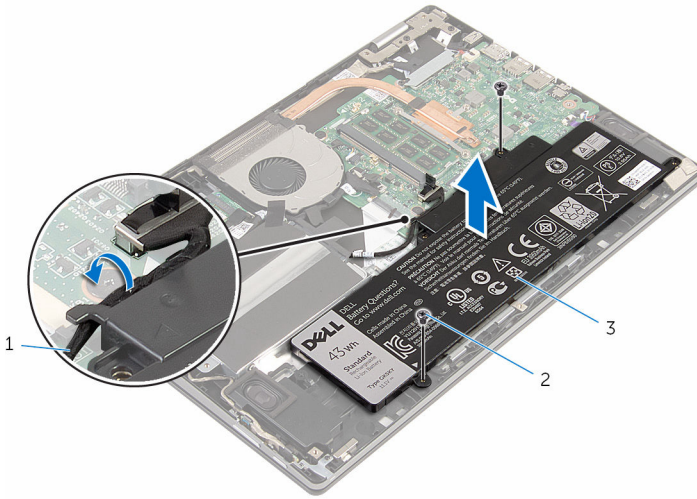
Prerequisites

Remove the [base cover](#).

Procedure

- 1 Remove the screws that secure the battery to the computer base.
- 2 Remove the hard-drive cable from the routing guides on the battery.

- 3** Lift the battery off the computer base.



1 hard-drive cable

2 screws (2)

3 battery

- 4** Turn the computer over.

- 5** Press and hold the power button for 5 seconds to ground the system board.



Replacing the battery



WARNING: Before working inside your computer, read the safety information that shipped with your computer and follow the steps in [Before working inside your computer](#). After working inside your computer, follow the instructions in [After working inside your computer](#). For more safety best practices, see the Regulatory Compliance home page at dell.com/regulatory_compliance.

Procedure

- 1 Align the screw holes on the battery with the screw holes on the computer base and place the battery on the computer base.
- 2 Route the hard-drive cable through the routing guides on the battery.
- 3 Replace the screws that secure the battery to the computer base.

Post-requisites

Replace the [base cover](#).

Removing the memory module



WARNING: Before working inside your computer, read the safety information that shipped with your computer and follow the steps in [Before working inside your computer](#). After working inside your computer, follow the instructions in [After working inside your computer](#). For more safety best practices, see the Regulatory Compliance home page at dell.com/regulatory_compliance.

Prerequisites

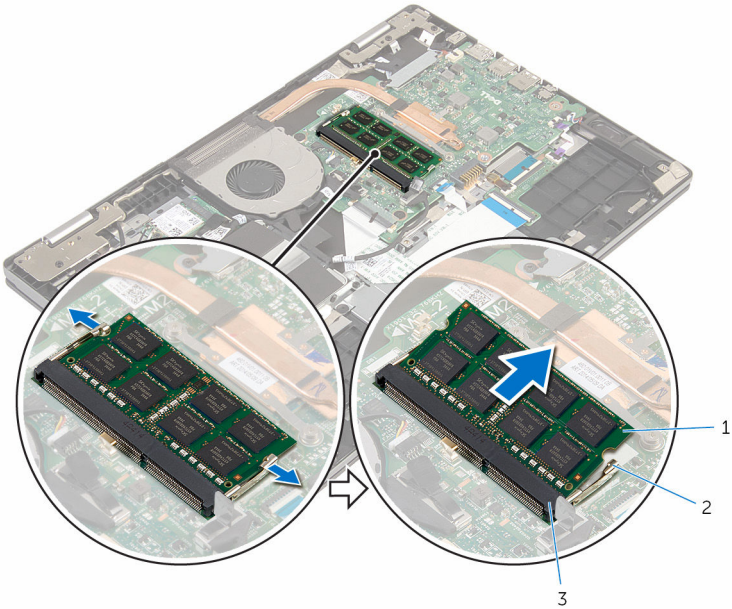
- 1 Remove the [base cover](#).
- 2 Remove the [battery](#).

Procedure

- 1 Use your fingertips to carefully spread apart the securing-clips on each end of the memory-module slot until the memory module pops up.



- 2 Remove the memory module from the memory-module slot.



1 memory module

2 securing clips (2)

3 memory-module slot

Replacing the memory module



WARNING: Before working inside your computer, read the safety information that shipped with your computer and follow the steps in [Before working inside your computer](#). After working inside your computer, follow the instructions in [After working inside your computer](#). For more safety best practices, see the Regulatory Compliance home page at dell.com/regulatory_compliance.

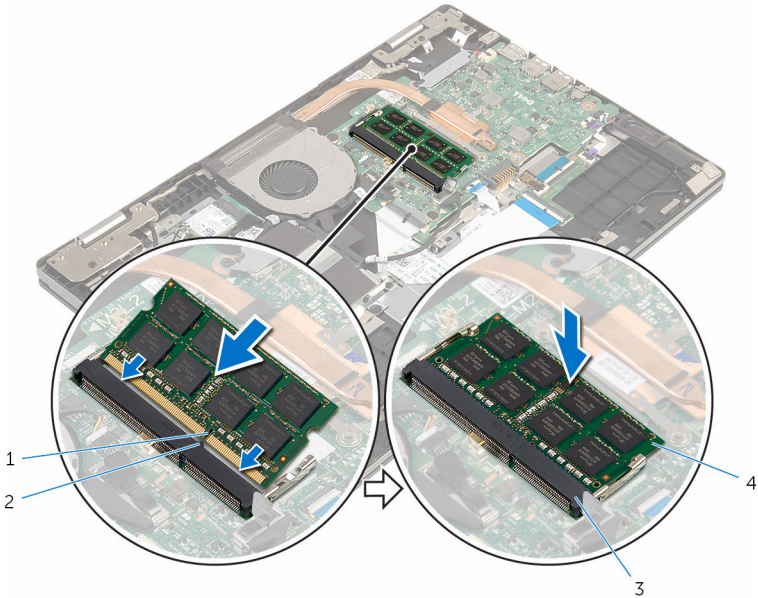
Procedure

- 1 Align the notch on the memory module with the tab on the memory-module slot.



- Slide the memory module firmly into the slot at an angle and press the memory module down until it clicks into place.

 **NOTE: If you do not hear the click, remove the memory module and reinstall it.**



1 notch

3 memory-module slot


2 tab

4 memory module


Post-requisites

- Replace the [battery](#).
- Replace the [base cover](#).

Removing the hard drive

 **WARNING:** Before working inside your computer, read the safety information that shipped with your computer and follow the steps in [Before working inside your computer](#). After working inside your computer, follow the instructions in [After working inside your computer](#). For more safety best practices, see the Regulatory Compliance home page at dell.com/regulatory_compliance.

 **CAUTION:** Hard drives are fragile. Exercise care when handling the hard drive.

 **CAUTION:** To avoid data loss, do not remove the hard drive while the computer is in sleep or on state.

Prerequisites

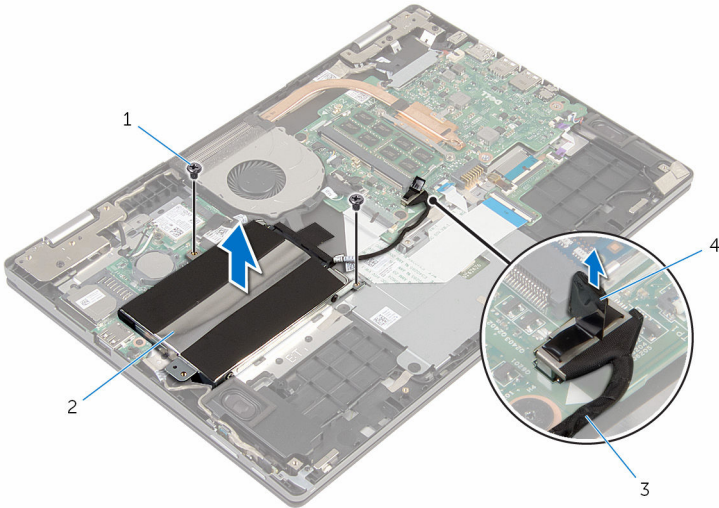
- 1 Remove the [base cover](#).
- 2 Remove the [battery](#).

Procedure

- 1 Remove the screws that secure the hard-drive assembly to the computer base.
- 2 Using the pull tab, disconnect the hard-drive cable from the system board.



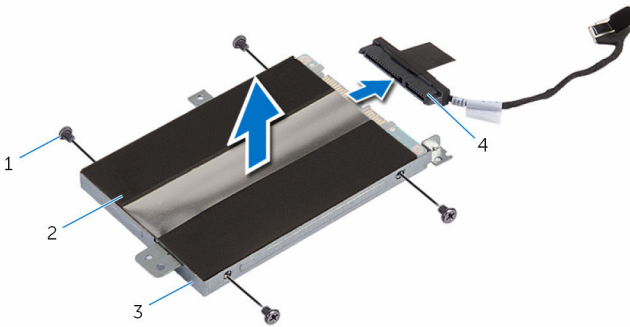
- 3** Lift the hard-drive assembly, along with its cable, off the computer base.



- | | | | |
|---|------------------|---|---------------------|
| 1 | screws (2) | 2 | hard-drive assembly |
| 3 | hard-drive cable | 4 | pull tab |

- 4** Disconnect the interposer from the hard-drive assembly.
5 Remove the screws that secure the hard-drive bracket to the hard drive.

6 Lift the hard-drive bracket off the hard drive.



1 screws (4)

2 hard drive

3 hard-drive bracket

4 interposer

Replacing the hard drive



WARNING: Before working inside your computer, read the safety information that shipped with your computer and follow the steps in [Before working inside your computer](#). After working inside your computer, follow the instructions in [After working inside your computer](#). For more safety best practices, see the Regulatory Compliance home page at dell.com/regulatory_compliance.



CAUTION: Hard drives are fragile. Exercise care when handling the hard drive.

Procedure

- 1 Align the screw holes on the hard-drive bracket with the screw holes on the hard drive.
- 2 Replace the screws that secure the hard-drive bracket to the hard drive.
- 3 Connect the interposer to the hard-drive assembly.
- 4 Align the screw holes on the hard-drive assembly with the screw holes on the computer base.
- 5 Replace the screws that secure the hard-drive assembly to the computer base.
- 6 Connect the hard-drive cable to the system board.

Post-requisites

- 1 Replace the [battery](#).
- 2 Replace the [base cover](#).

Removing the coin-cell battery



WARNING: Before working inside your computer, read the safety information that shipped with your computer and follow the steps in [Before working inside your computer](#). After working inside your computer, follow the instructions in [After working inside your computer](#). For more safety best practices, see the Regulatory Compliance home page at dell.com/regulatory_compliance.



CAUTION: Removing the coin-cell battery resets the BIOS settings to default. It is recommended that you note the BIOS settings before removing the coin-cell battery.

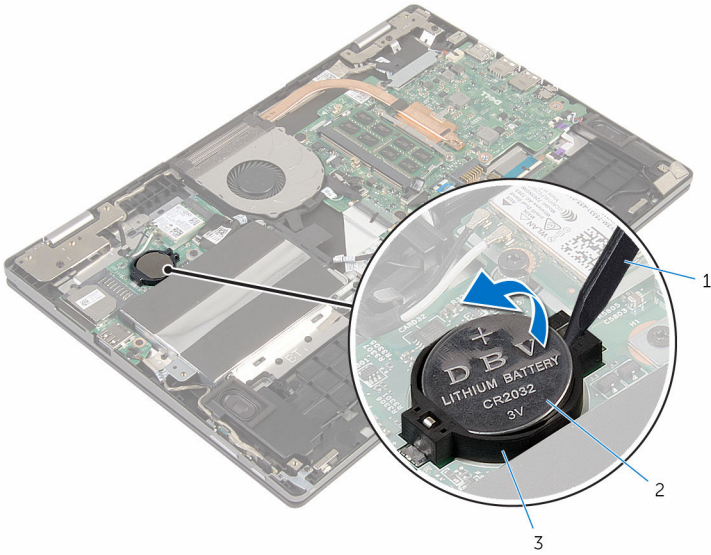
Prerequisites

- 1 Remove the [base cover](#).
- 2 Remove the [battery](#).

Procedure

Using a plastic scribe, gently pry the coin-cell battery out of the battery socket on the I/O board.





- 1 plastic scribe
- 3 battery socket

- 2 coin-cell battery

Replacing the coin-cell battery



WARNING: Before working inside your computer, read the safety information that shipped with your computer and follow the steps in [Before working inside your computer](#). After working inside your computer, follow the instructions in [After working inside your computer](#). For more safety best practices, see the Regulatory Compliance home page at dell.com/regulatory_compliance.

Procedure

With the positive-side facing up, snap the coin-cell battery into the battery socket on the I/O board.

Post-requisites

- 1 Replace the [battery](#).
- 2 Replace the [base cover](#).



Removing the wireless card



WARNING: Before working inside your computer, read the safety information that shipped with your computer and follow the steps in [Before working inside your computer](#). After working inside your computer, follow the instructions in [After working inside your computer](#). For more safety best practices, see the Regulatory Compliance home page at dell.com/regulatory_compliance.

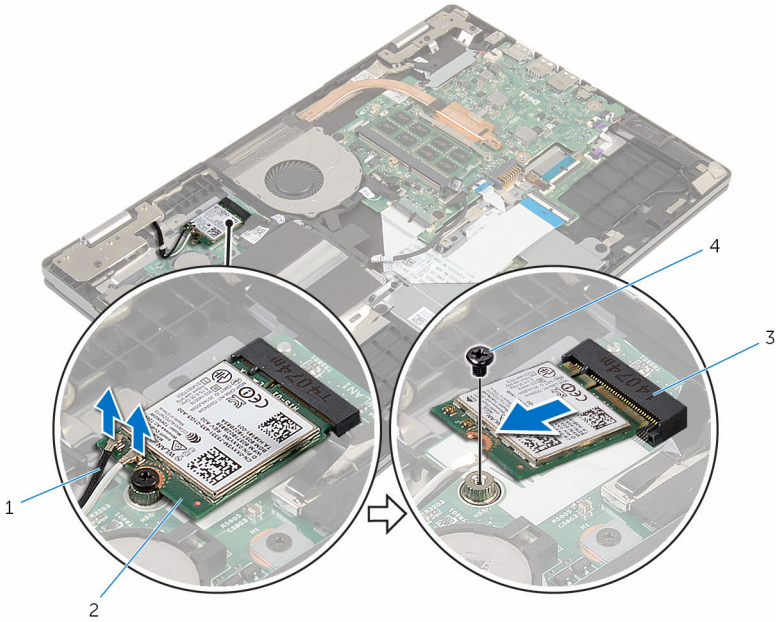
Prerequisites

- 1 Remove the [base cover](#).
- 2 Remove the [battery](#).

Procedure

- 1 Disconnect the antenna cables from the wireless card.
- 2 Remove the screw that secures the wireless card to the system board.

3 Slide and remove the wireless card from the wireless-card slot.



1 antenna cables (2)

2 wireless card

3 wireless-card slot

4 screw

Replacing the wireless card



WARNING: Before working inside your computer, read the safety information that shipped with your computer and follow the steps in [Before working inside your computer](#). After working inside your computer, follow the instructions in [After working inside your computer](#). For more safety best practices, see the Regulatory Compliance home page at dell.com/regulatory_compliance.

Procedure



CAUTION: To avoid damage to the wireless card, do not place any cables under it.

- 1 Align the notch on the wireless card with the tab on the wireless-card slot.
- 2 Insert the wireless card at an angle into the wireless-card slot.
- 3 Align the screw hole on the wireless card with the screw hole on the I/O board.
- 4 Replace the screw that secures the wireless card to the I/O board.
- 5 Connect the antenna cables to the wireless card.

The following table provides the antenna-cable color scheme for the wireless card supported by your computer.

Connectors on the wireless card	Antenna-cable color
Main (white triangle)	white
Auxiliary (black triangle)	black

Post-requisites

- 1 Replace the [battery](#).
- 2 Replace the [base cover](#).

Removing the keyboard daughter-board



WARNING: Before working inside your computer, read the safety information that shipped with your computer and follow the steps in [Before working inside your computer](#). After working inside your computer, follow the instructions in [After working inside your computer](#). For more safety best practices, see the Regulatory Compliance home page at dell.com/regulatory_compliance.

Prerequisites

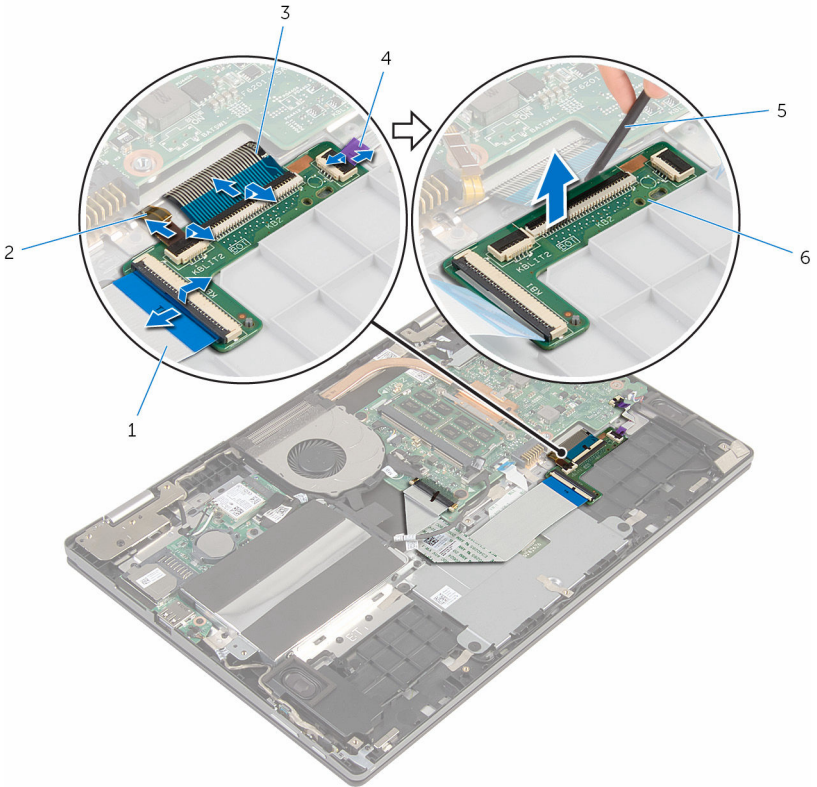
- 1 Remove the [base cover](#).
- 2 Remove the [battery](#).

Procedure

- 1 Lift the latches and disconnect the keyboard cables and keyboard-backlight cables from the keyboard daughter-board.



2 Using a plastic scribe, gently pry to peel off the keyboard daughter-board from the computer base.



1 keyboard cable-1

2 keyboard-backlight cable-2

3 keyboard cable-2

4 keyboard-backlight cable-1

5 plastic scribe

6 keyboard daughter-board

Replacing the keyboard daughter-board



WARNING: Before working inside your computer, read the safety information that shipped with your computer and follow the steps in [Before working inside your computer](#). After working inside your computer, follow the instructions in [After working inside your computer](#). For more safety best practices, see the Regulatory Compliance home page at dell.com/regulatory_compliance.

Procedure

- 1 Adhere the keyboard daughter-board to the computer base.
- 2 Slide the keyboard cables and keyboard-backlight cables into the connectors on the keyboard daughter-board and press down the latches to secure the cables.

Post-requisites

- 1 Replace the [battery](#).
- 2 Replace the [base cover](#).



Removing the power and volume-buttons board



WARNING: Before working inside your computer, read the safety information that shipped with your computer and follow the steps in [Before working inside your computer](#). After working inside your computer, follow the instructions in [After working inside your computer](#). For more safety best practices, see the Regulatory Compliance home page at dell.com/regulatory_compliance.

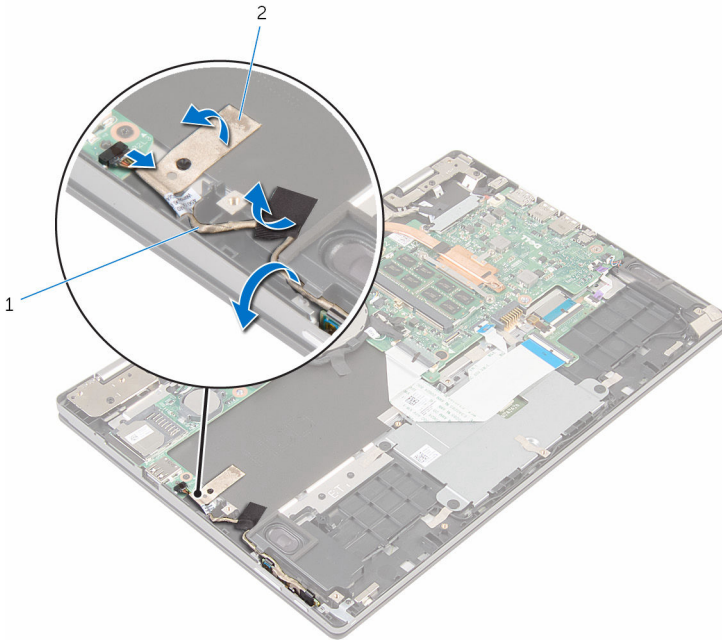
Prerequisites

- 1 Remove the [base cover](#).
- 2 Remove the [battery](#).
- 3 Follow the procedure from step 1 to step 3 in "Removing the [hard drive](#)".

Procedure

- 1 Peel off the tapes that secure the power and volume-buttons board cable to the computer base.
- 2 Disconnect the power and volume-buttons board cable from the I/O board.

- 3 Remove the power and volume-buttons board cable from the routing guides on the speaker.



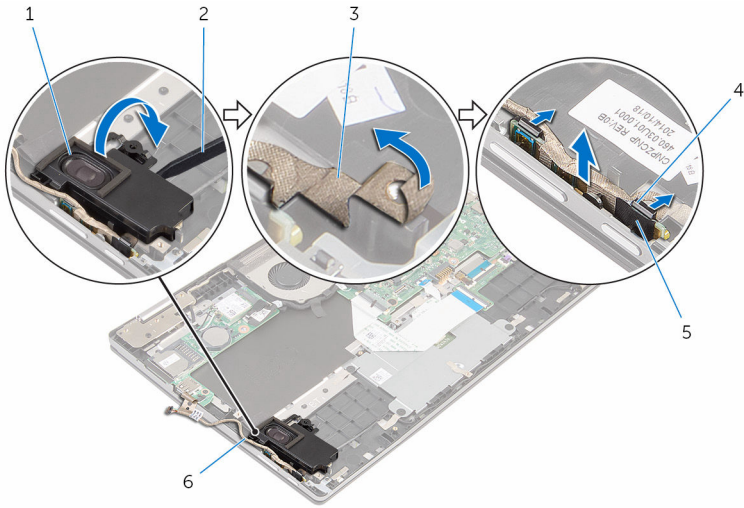
1 power and volume-buttons
board cable

2 tapes (2)

- 4 Using a plastic scribe, lift the speaker and peel off the tape that secures the power and volume-buttons board cable to the computer base.
- 5 Release the power and volume-buttons board from the tabs on the computer base.



- 6** Lift the power and volume-buttons board, along with its cable, off the computer base.



1 speaker

2 plastic scribe

3 tape

4 tabs (2)

5 power and volume-buttons board

6 power and volume-buttons board cable

Replacing the power and volume-buttons board



WARNING: Before working inside your computer, read the safety information that shipped with your computer and follow the steps in [Before working inside your computer](#). After working inside your computer, follow the instructions in [After working inside your computer](#). For more safety best practices, see the Regulatory Compliance home page at dell.com/regulatory_compliance.

Procedure

- 1 Place the power and volume-buttons board in the slot on the computer base and snap the tabs into place.
- 2 Adhere the tape that secures the power and volume-buttons board to the computer base.
- 3 Using the alignment post, place the left speaker on the computer base and snap it into place.
- 4 Route the power and volume-buttons board cable through the routing guides on the speaker.
- 5 Connect the power and volume-buttons board cable to the I/O board.
- 6 Adhere the tapes that secure the power and volume-buttons board cable to the computer base.

Post-requisites

- 1 Follow the procedure from step 4 to step 6 in “Replacing the [hard drive](#)”.
- 2 Replace the [battery](#).
- 3 Replace the [base cover](#).



Removing the speakers



WARNING: Before working inside your computer, read the safety information that shipped with your computer and follow the steps in [Before working inside your computer](#). After working inside your computer, follow the instructions in [After working inside your computer](#). For more safety best practices, see the Regulatory Compliance home page at dell.com/regulatory_compliance.

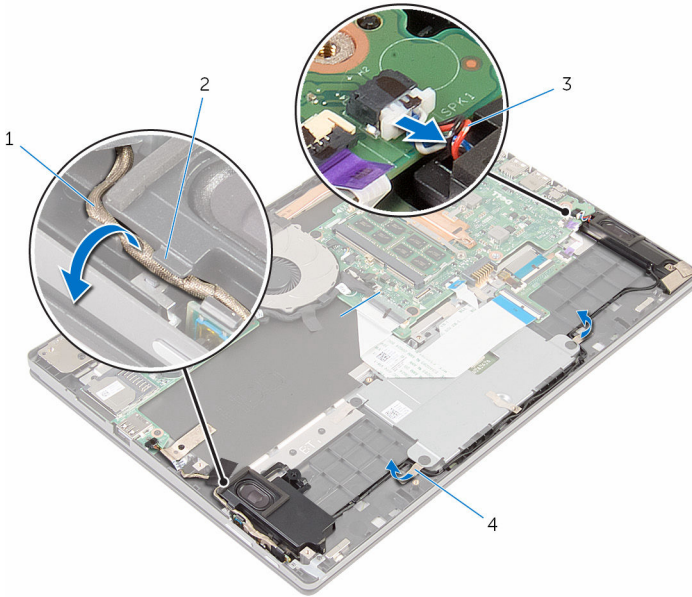
Prerequisites

- 1 Remove the [base cover](#).
- 2 Remove the [battery](#).

Procedure

- 1 Disconnect the speaker cable from the system board.
- 2 Remove the power and volume-buttons board cable from the routing guides on the speaker.

- 3** Peel off the tapes that secure the speaker cable to the computer base.

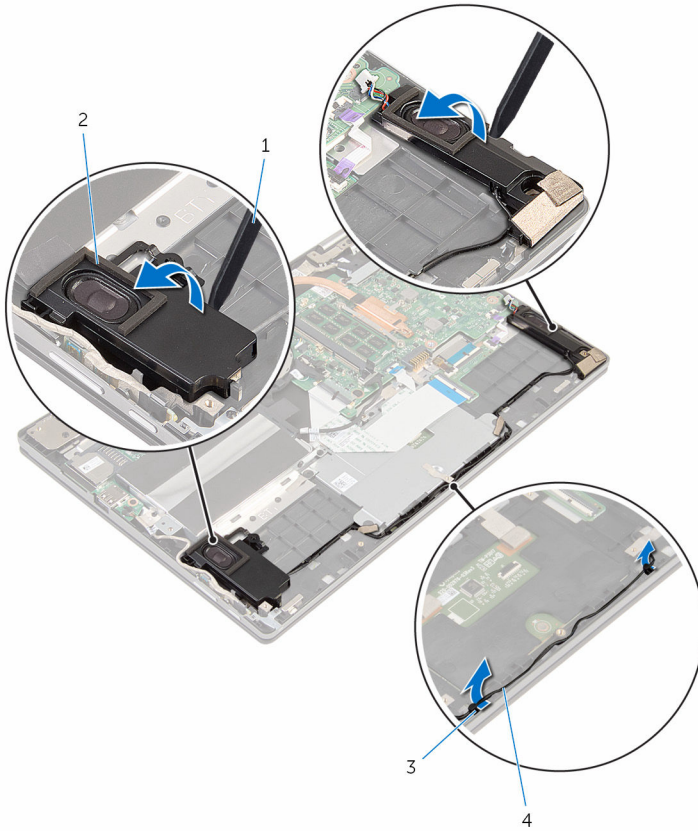


- | | | | |
|---|--------------------------------------|---|----------------|
| 1 | power and volume-buttons board cable | 2 | routing guides |
| 3 | speaker cable | 4 | tapes (2) |

- 4** Remove the speaker cable from the routing guides on the computer base.



- 5 Using a plastic scribe, release the speakers from the alignment posts and lift the speakers along with its cable off the computer base.



- 1 plastic scribe
3 routing guides

- 2 speakers (2)
4 speaker cable

Replacing the speakers



WARNING: Before working inside your computer, read the safety information that shipped with your computer and follow the steps in [Before working inside your computer](#). After working inside your computer, follow the instructions in [After working inside your computer](#). For more safety best practices, see the [Regulatory Compliance home page at dell.com/regulatory_compliance](#).

Procedure

- 1 Using the alignment posts on the computer base, place the speakers on the computer base.
- 2 Route the speaker cable through the routing guides on the computer base.
- 3 Adhere the tapes that secure the speaker cable to the computer base.
- 4 Route the power and volume-buttons board cable through the routing guides on the speaker.
- 5 Connect the speaker cable to the system board.

Post-requisites

- 1 Replace the [battery](#).
- 2 Replace the [base cover](#).



Removing the touch pad



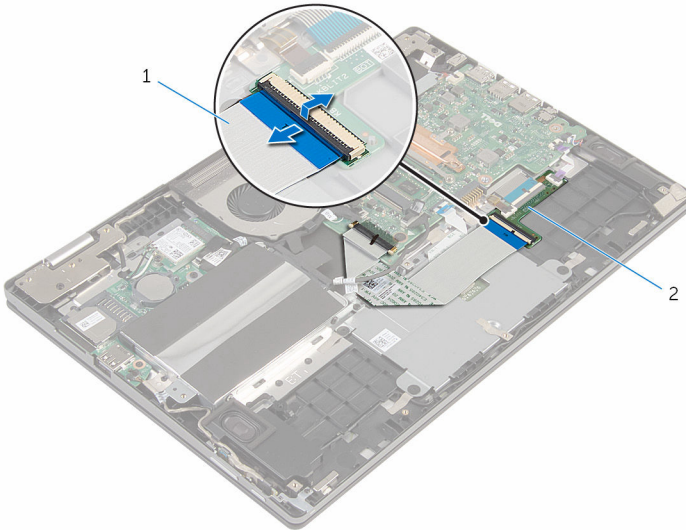
WARNING: Before working inside your computer, read the safety information that shipped with your computer and follow the steps in [Before working inside your computer](#). After working inside your computer, follow the instructions in [After working inside your computer](#). For more safety best practices, see the Regulatory Compliance home page at dell.com/regulatory_compliance.

Prerequisites

- 1 Remove the [base cover](#).
- 2 Remove the [battery](#).

Procedure

- 1 Lift the connector latch and disconnect the keyboard cable from the keyboard daughter-board.



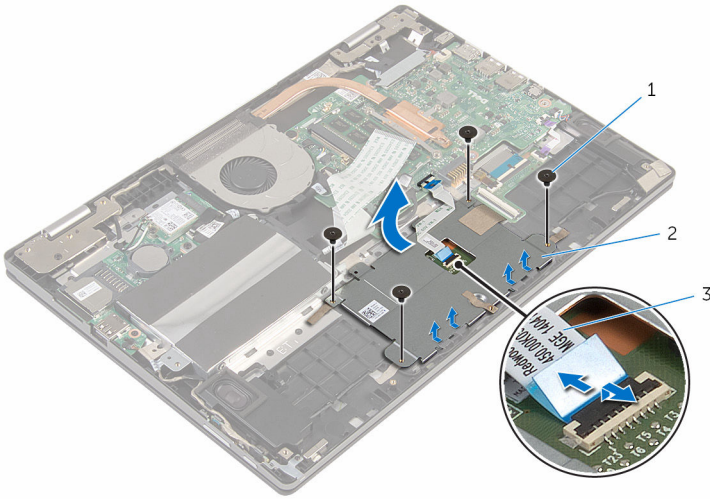
1 keyboard cable

2 keyboard daughter-board

- 2 Lift the connector latch and disconnect the touch-pad cable from the touch pad.
- 3 Remove the screws that secure the touch-pad bracket to the computer base.



- 4 Lift the touch-pad bracket off the computer base.



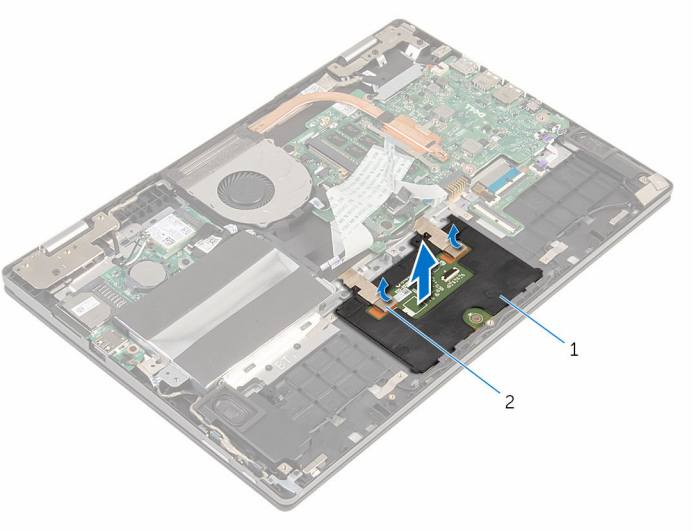
1 screws (4)

2 touch-pad bracket

3 touch-pad cable

- 5 Peel off the tape that secures the touch pad to the computer base.

6 Lift the touch pad away from the computer.



1 tape

2 touch pad



Replacing the touch pad



WARNING: Before working inside your computer, read the safety information that shipped with your computer and follow the steps in [Before working inside your computer](#). After working inside your computer, follow the instructions in [After working inside your computer](#). For more safety best practices, see the [Regulatory Compliance home page at dell.com/regulatory_compliance](http://dell.com/regulatory_compliance).

Procedure

- 1 Slide the tabs on the touch pad into the slots on the computer base.
- 2 Adhere the tape that secures the touch pad to the computer base.
- 3 Align the screw holes on the touch-pad bracket with the screw holes on the computer base.
- 4 Replace the screws that secure the touch-pad bracket to the computer base.
- 5 Slide the touch-pad cable into the touch-pad connector and press down the latch to secure the cable.
- 6 Slide the keyboard cable into the keyboard daughter-board connector and press down the latch to secure the cable.

Post-requisites

- 1 Replace the [battery](#).
- 2 Replace the [base cover](#).

Removing the fan



WARNING: Before working inside your computer, read the safety information that shipped with your computer and follow the steps in [Before working inside your computer](#). After working inside your computer, follow the instructions in [After working inside your computer](#). For more safety best practices, see the Regulatory Compliance home page at dell.com/regulatory_compliance.

Prerequisites

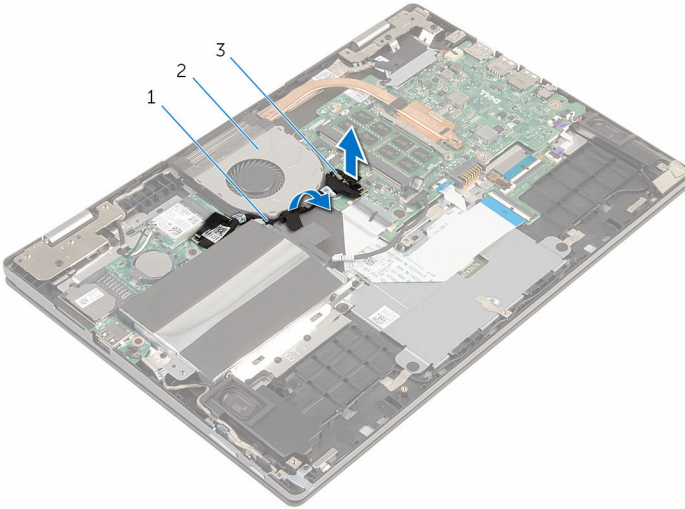
- 1 Remove the [base cover](#).
- 2 Remove the [battery](#).

Procedure

- 1 Using the pull tab, disconnect the I/O-board cable from the system board.



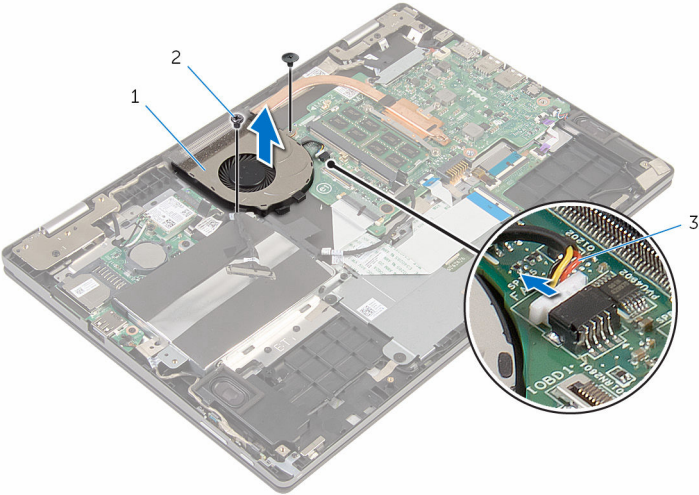
- 2 Remove the I/O board cable from the routing guides on the fan.



- | | | | |
|---|---------------------------|---|-----|
| 1 | I/O-board cable | 2 | fan |
| 3 | I/O-board cable connector | | |

- 3 Disconnect the fan cable from the system board.
- 4 Remove the screws that secure the fan to the computer base.

5 Lift the fan off the computer base.



- 1 fan
- 3 fan cable

2 screws (2)



Replacing the fan



WARNING: Before working inside your computer, read the safety information that shipped with your computer and follow the steps in [Before working inside your computer](#). After working inside your computer, follow the instructions in [After working inside your computer](#). For more safety best practices, see the [Regulatory Compliance home page at dell.com/regulatory_compliance](http://dell.com/regulatory_compliance).


Procedure

- 1 Align the screw holes on the fan with the screw holes on the computer base.
- 2 Replace the screws that secure the fan to the computer base.
- 3 Connect the fan cable to the system board.
- 4 Route the I/O-board cable through the routing guides on the fan.
- 5 Connect the I/O-board cable to the system board.


Post-requisites

- 1 Replace the [battery](#).
- 2 Replace the [base cover](#).

Removing the heat sink

 **WARNING:** Before working inside your computer, read the safety information that shipped with your computer and follow the steps in [Before working inside your computer](#). After working inside your computer, follow the instructions in [After working inside your computer](#). For more safety best practices, see the Regulatory Compliance home page at dell.com/regulatory_compliance.

 **WARNING:** The heat sink may become hot during normal operation. Allow sufficient time for the heat sink to cool before you touch it.

 **CAUTION:** For maximum cooling of the processor, do not touch the heat transfer areas on the heat sink. The oils in your skin can reduce the heat transfer capability of the thermal grease.

Prerequisites

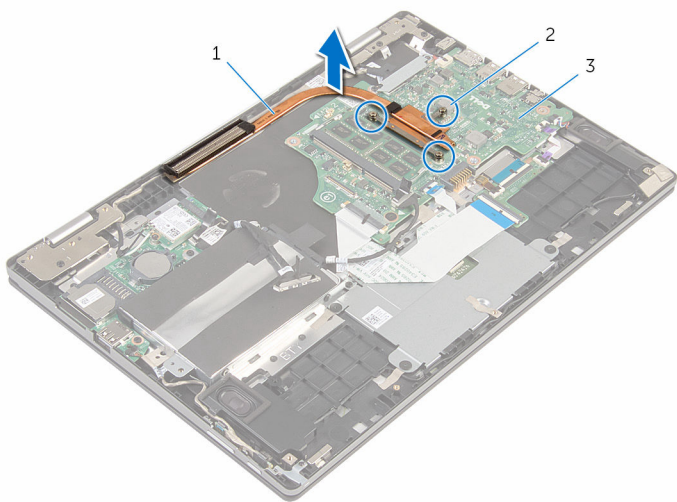
- 1 Remove the [base cover](#).
- 2 Remove the [battery](#).
- 3 Remove the [fan](#).

Procedure

- 1 In sequential order (as indicated on the heat sink), loosen the captive screws that secure the heat sink to the system board.



- 2 Lift the heat sink off the system board.






1 heat sink

2 captive screws (3)

3 system board

Replacing the heat sink

-  **WARNING:** Before working inside your computer, read the safety information that shipped with your computer and follow the steps in [Before working inside your computer](#). After working inside your computer, follow the instructions in [After working inside your computer](#). For more safety best practices, see the Regulatory Compliance home page at dell.com/regulatory_compliance.
-  **CAUTION:** Incorrect alignment of the heat sink can cause damage to the system board and processor.
-  **NOTE:** The original thermal grease can be reused if the original system board and heat sink are reinstalled together. If either the system board or the heat sink is replaced, use the thermal pad provided in the kit to make sure that thermal conductivity is achieved.

Procedure

- 1 Align the screw holes on the heat sink with the screw holes on the system board.
- 2 In sequential order (indicated on the heat sink), tighten the captive screws that secure the heat sink to the system board.

Post-requisites

- 1 Replace the [fan](#).
- 2 Replace the [battery](#).
- 3 Replace the [base cover](#).



Removing the I/O board



WARNING: Before working inside your computer, read the safety information that shipped with your computer and follow the steps in [Before working inside your computer](#). After working inside your computer, follow the instructions in [After working inside your computer](#). For more safety best practices, see the Regulatory Compliance home page at dell.com/regulatory_compliance.

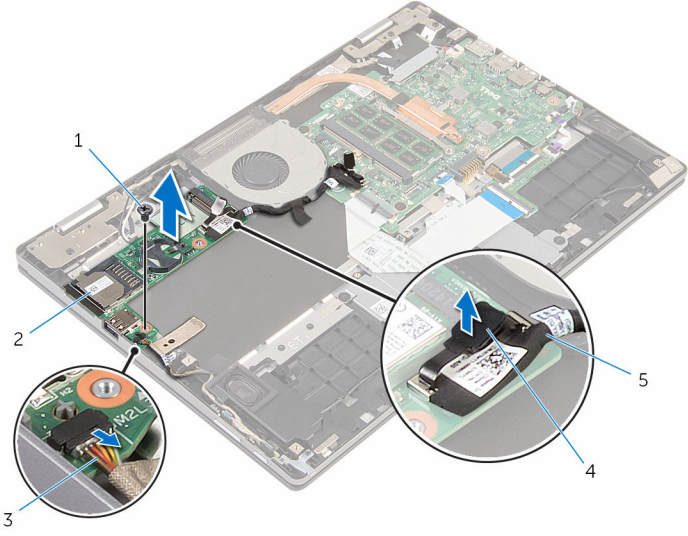
Prerequisites

- 1 Remove the [base cover](#).
- 2 Remove the [battery](#).
- 3 Follow the procedure from step 1 to step 3 in “Removing the [Hard Drive](#)”.
- 4 Remove the [wireless card](#).
- 5 Remove the [coin-cell battery](#).

Procedure

- 1 Disconnect the I/O-board cable from the I/O board.
- 2 Using the pull tab disconnect the power and volume-buttons board cable from the I/O board.
- 3 Remove the screw that secures the I/O board to the computer base.

4 Lift the I/O board off the computer base.



- | | | | |
|---|--------------------------------------|---|-----------|
| 1 | screw | 2 | I/O-board |
| 3 | power and volume-buttons board cable | 4 | pull tab |
| 5 | I/O-board cable | | |



Replacing the I/O board



WARNING: Before working inside your computer, read the safety information that shipped with your computer and follow the steps in [Before working inside your computer](#). After working inside your computer, follow the instructions in [After working inside your computer](#). For more safety best practices, see the Regulatory Compliance home page at dell.com/regulatory_compliance.

Procedure

- 1 Using the alignment posts, place the I/O board on the computer base.
- 2 Align the screw hole on the I/O board with the screw hole on the computer base.
- 3 Replace the screw that secures the I/O board to the computer base.
- 4 Connect the power and volume-buttons board cable to the I/O board.
- 5 Connect the I/O-board cable to the I/O board.

Post-requisites

- 1 Replace the [coin-cell battery](#).
- 2 Replace the [wireless card](#).
- 3 Follow the procedure from step 4 to step 6 in “Replacing the [hard drive](#)”.
- 4 Replace the [battery](#).
- 5 Replace the [base cover](#).

Removing the power-adapter port



WARNING: Before working inside your computer, read the safety information that shipped with your computer and follow the steps in [Before working inside your computer](#). After working inside your computer, follow the instructions in [After working inside your computer](#). For more safety best practices, see the Regulatory Compliance home page at dell.com/regulatory_compliance.

Prerequisites

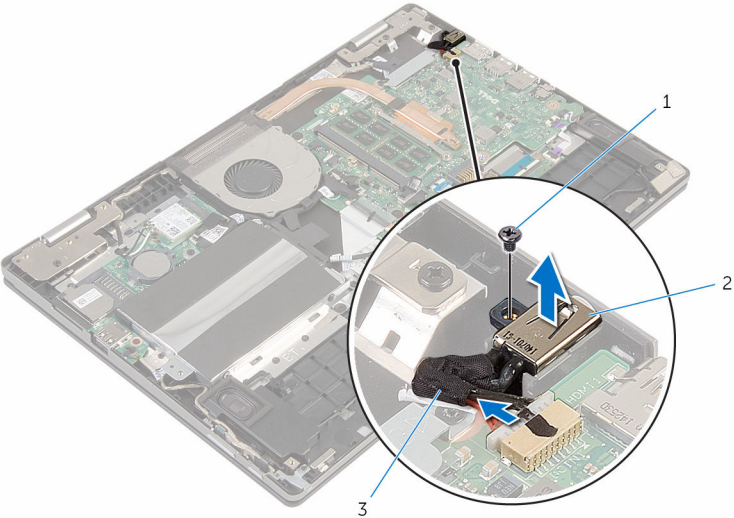
- 1 Remove the [base cover](#).
- 2 Remove the [battery](#).

Procedure

- 1 Disconnect the power-adapter port cable from the system board.
- 2 Remove the screw that secures the power-adapter port to the computer base.



3 Lift the power-adapter port with its cable, off the computer base.



1 screw

2 power-adapter port

3 power-adapter port cable



Replacing the power-adapter port



WARNING: Before working inside your computer, read the safety information that shipped with your computer and follow the steps in [Before working inside your computer](#). After working inside your computer, follow the instructions in [After working inside your computer](#). For more safety best practices, see the Regulatory Compliance home page at dell.com/regulatory_compliance.

Procedure

- 1 Place the power-adapter port into the slot on the computer base.
- 2 Align the screw hole on the power-adapter port with the screw hole on the computer base.
- 3 Connect the power-adapter port cable to the system board.

Post-requisites

- 1 Replace the [battery](#).
- 2 Replace the [base cover](#).



Removing the system board



WARNING: Before working inside your computer, read the safety information that shipped with your computer and follow the steps in [Before working inside your computer](#). After working inside your computer, follow the instructions in [After working inside your computer](#). For more safety best practices, see the Regulatory Compliance home page at dell.com/regulatory_compliance.



NOTE: Your computer's Service Tag is stored in the system board. You must enter the Service Tag in the BIOS setup program after you replace the system board.



NOTE: Replacing the system board removes any changes you have made to the BIOS using the BIOS setup program. You must make the desired changes again after you replace the system board.



NOTE: Before disconnecting the cables from the system board, note the location of the connectors so that you can reconnect them correctly after you replace the system board.

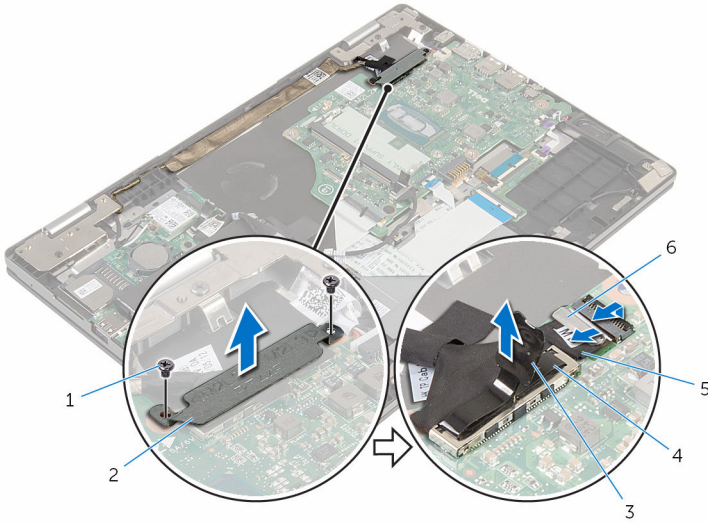
Prerequisites

- 1 Remove the [base cover](#).
- 2 Remove the [battery](#).
- 3 Remove the [memory module](#).
- 4 Remove the [fan](#).
- 5 Remove the [heat sink](#).

Procedure

- 1 Remove the screws that secure the display-cable bracket to the system board and lift the display-cable bracket off the system board.
- 2 Using the pull tab, disconnect the display cable from the system board.

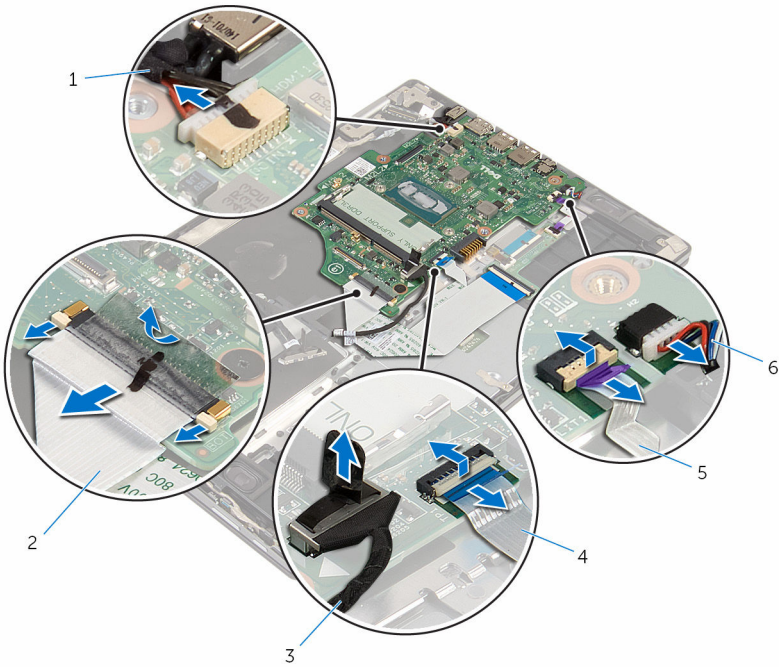
- 3** Peel off the tape on the Windows-button board connector, lift the latch and disconnect the Windows-button board cable from the system board.



- | | | | |
|---|----------------------------|---|-----------------------|
| 1 | screws (2) | 2 | display-cable bracket |
| 3 | pull tab | 4 | display cable |
| 5 | Windows-button board cable | 6 | tape |

- 4** Using the pull tab disconnect the hard-drive cable from the system board.
- 5** Release the latches and disconnect the keyboard cable from the system board.
- 6** Lift the connector latches and disconnect the keyboard-backlight cable and the touch-pad cable from the system board.

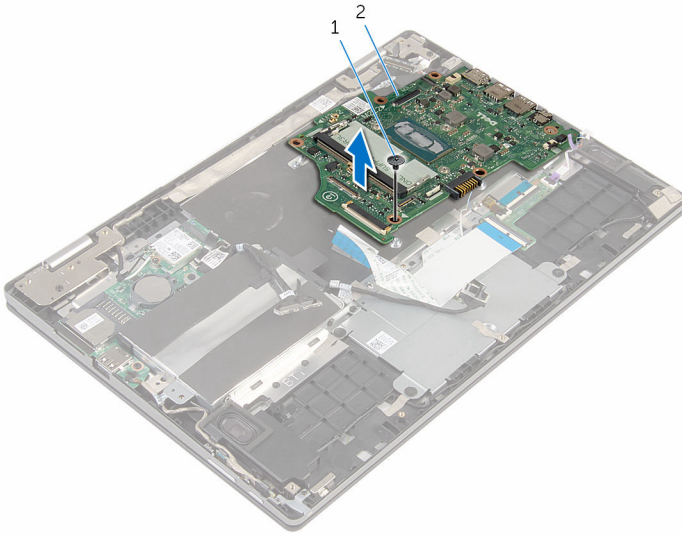
- 7** Disconnect the speaker cable and the power-adapter port cable from the system board.



- | | | | |
|---|--------------------------|---|-----------------|
| 1 | power-adapter port cable | 2 | keyboard cable |
| 3 | hard-drive cable | 4 | touch-pad cable |
| 5 | keyboard-backlight cable | 6 | speaker cable |

- 8** Remove the screw that secures the system board to the computer base.

9 Lift the system board off the computer base.



1 screw

2 system board



Replacing the system board



WARNING: Before working inside your computer, read the safety information that shipped with your computer and follow the steps in [Before working inside your computer](#). After working inside your computer, follow the instructions in [After working inside your computer](#). For more safety best practices, see the [Regulatory Compliance home page at dell.com/regulatory_compliance](#).



NOTE: Your computer's Service Tag is stored in the system board. You must enter the Service Tag in the BIOS setup program after you replace the system board.



NOTE: Replacing the system board removes any changes you have made to the BIOS using the BIOS setup program. You must make the desired changes again after you replace the system board.

Procedure

- 1 Align the screw holes on the system board with the screw holes on the computer base.
- 2 Replace the screw that secures the system board to the computer base.
- 3 Connect the power-adaptor port cable and the speaker cable to the system board.
- 4 Slide the touch-pad cable and keyboard-backlight cable into the connectors on the system board and press down the latches to secure the cable.
- 5 Slide the keyboard cable into the connector on the system board and press down the latch to secure the cable.
- 6 Connect the hard-drive cable to the system board.
- 7 Slide the Windows-button board cable into the connector on the system board and press down the latch to secure the cable.
- 8 Adhere the tape to the Windows-button board connector.
- 9 Connect the display cable to the system board.
- 10 Align the screw holes on the display-cable bracket with the screw holes on the system board.
- 11 Replace the screws that secure the display-cable bracket to the system board.

Post-requisites

- 1 Replace the [heat sink](#).
- 2 Replace the [fan](#).
- 3 Replace the [memory module](#).
- 4 Replace the [battery](#).
- 5 Replace the [base cover](#).

Entering the Service Tag in the BIOS

- 1 Turn on the computer.
- 2 Press F2 when the DELL logo is displayed to enter the BIOS setup program.
- 3 Navigate to the **Main** tab and enter the Service Tag in the **Service Tag Input** field.



Removing the display assembly



WARNING: Before working inside your computer, read the safety information that shipped with your computer and follow the steps in [Before working inside your computer](#). After working inside your computer, follow the instructions in [After working inside your computer](#). For more safety best practices, see the Regulatory Compliance home page at dell.com/regulatory_compliance.

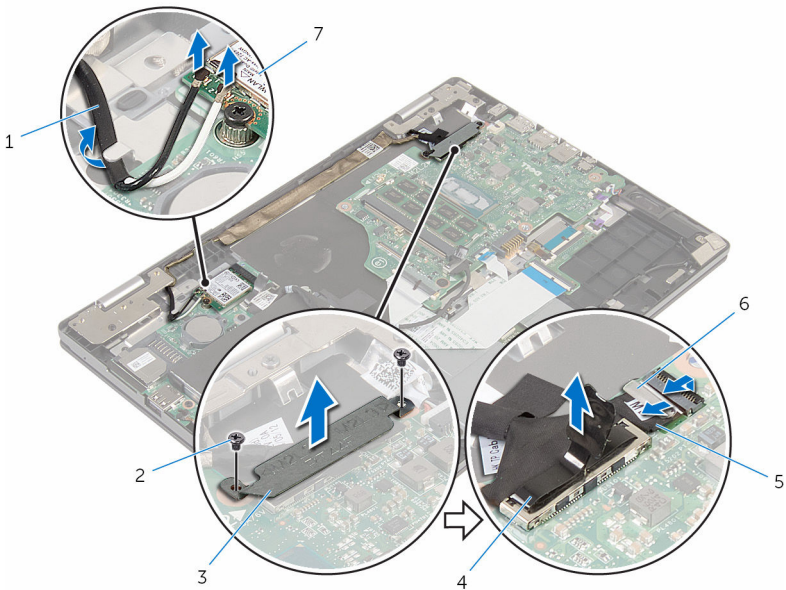
Prerequisites

- 1 Remove the [base cover](#).
- 2 Remove the [battery](#).
- 3 Remove the [fan](#).
- 4 Remove the [heat sink](#).

Procedure

- 1 Disconnect the antenna cables from the wireless card.
- 2 Remove the screws that secure the display-cable bracket to the system board.
- 3 Lift the display-cable bracket off the system board.
- 4 Using the pull tab disconnect the display cable from the system board.

- 5 Peel off the tape on the Windows-button board connector, lift the latch and disconnect the Windows-button board cable from the system board.



- | | | | |
|---|----------------------------|---|---------------|
| 1 | antenna cables (2) | 2 | screws (2) |
| 3 | display-cable bracket | 4 | display cable |
| 5 | Windows-button board cable | 6 | tape |
| 7 | wireless card | | |

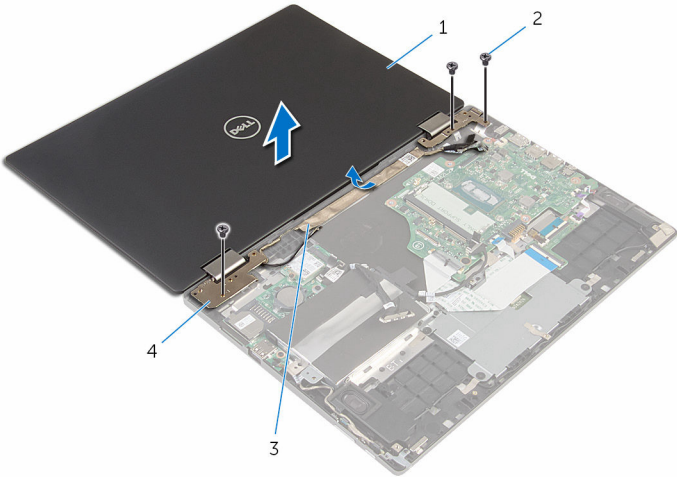
- 6 Turn the computer over and open the display as far as possible.

⚠ CAUTION: Place the computer on a soft and clean surface to avoid scratching the display.

- 7 Place the computer face down on a flat surface.
- 8 Peel off the tape that secures the display cable to the computer base.
- 9 Remove the screws that secure the display assembly to the computer base.



10 Lift the display assembly off the computer base.



1 display assembly

2 screws (3)

3 tape

4 display hinges (2)



Replacing the display assembly



WARNING: Before working inside your computer, read the safety information that shipped with your computer and follow the steps in [Before working inside your computer](#). After working inside your computer, follow the instructions in [After working inside your computer](#). For more safety best practices, see the Regulatory Compliance home page at dell.com/regulatory_compliance.

Procedure



CAUTION: Place the computer on a soft and clean surface to avoid scratching the display.

- 1 Place the display assembly on the computer base.
- 2 Align the screw holes on the display hinges with the screw holes on the computer base.
- 3 Replace the screws that secure the display assembly to the computer base.
- 4 Adhere the tape that secures the display cable to the computer base.
- 5 Close the display and turn the computer over.
- 6 Slide the Windows button-board cable into the connector on the system board and press down the latch to secure the cable.
- 7 Adhere the tape to the Windows button-board connector.
- 8 Connect the display cable to the system board.
- 9 Align the screw holes on the display-cable bracket with the screw holes on the system board.
- 10 Replace the screws that secure the display-cable bracket to the system board.
- 11 Connect the antenna cables to the wireless card.

Post-requisites

- 1 Replace the [heat sink](#).
- 2 Replace the [fan](#).
- 3 Replace the [battery](#).



- 4 Replace the [base cover](#).



Removing the computer base



WARNING: Before working inside your computer, read the safety information that shipped with your computer and follow the steps in [Before working inside your computer](#). After working inside your computer, follow the instructions in [After working inside your computer](#). For more safety best practices, see the Regulatory Compliance home page at dell.com/regulatory_compliance.

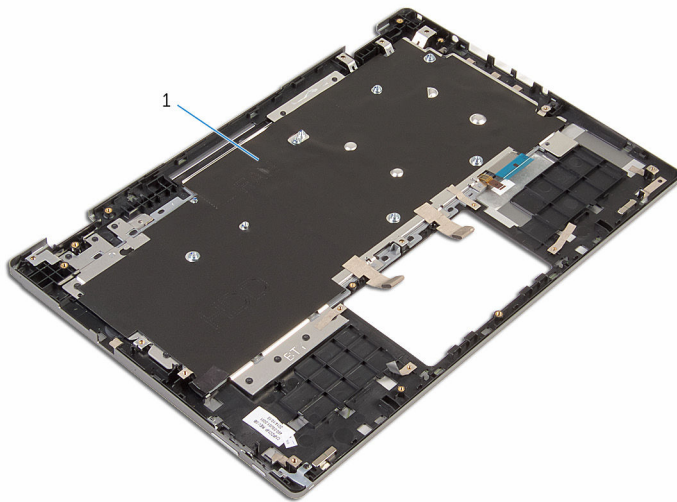
Prerequisites

- 1 Remove the [base cover](#).
- 2 Remove the [battery](#).
- 3 Follow the procedure from step 1 to step 3 in “Removing the [hard drive](#)”.
- 4 Remove the [keyboard daughter-board](#).
- 5 Remove the [touch pad](#).
- 6 Remove the [fan](#).
- 7 Remove the [heat sink](#).
- 8 Remove the [I/O board](#).
- 9 Remove the [power and volume-buttons board](#).
- 10 Remove the [speakers](#).
- 11 Remove the [display assembly](#).
- 12 Remove the [power-adapter port](#).
- 13 Remove the [system board](#).

Procedure

After performing the steps in prerequisites we are left with the computer base.





1 computer base

Replacing the computer base



WARNING: Before working inside your computer, read the safety information that shipped with your computer and follow the steps in [Before working inside your computer](#). After working inside your computer, follow the instructions in [After working inside your computer](#). For more safety best practices, see the Regulatory Compliance home page at dell.com/regulatory_compliance.

Procedure

Place the computer base on a flat surface with the keyboard facing down.

Post-requisites

- 1 Replace the [system board](#).
- 2 Replace the [power-adapter port](#).
- 3 Replace the [display assembly](#).
- 4 Replace the [speakers](#).
- 5 Replace the [power and volume-buttons board](#).
- 6 Replace the [I/O board](#).
- 7 Replace the [heat sink](#).
- 8 Replace the [fan](#).
- 9 Replace the [touch pad](#).
- 10 Replace the [keyboard daughter-board](#).
- 11 Follow the procedure from step 4 to step 6 in “Replacing the [hard drive](#)”.
- 12 Replace the [battery](#).
- 13 Replace the [base cover](#).



Removing the display panel



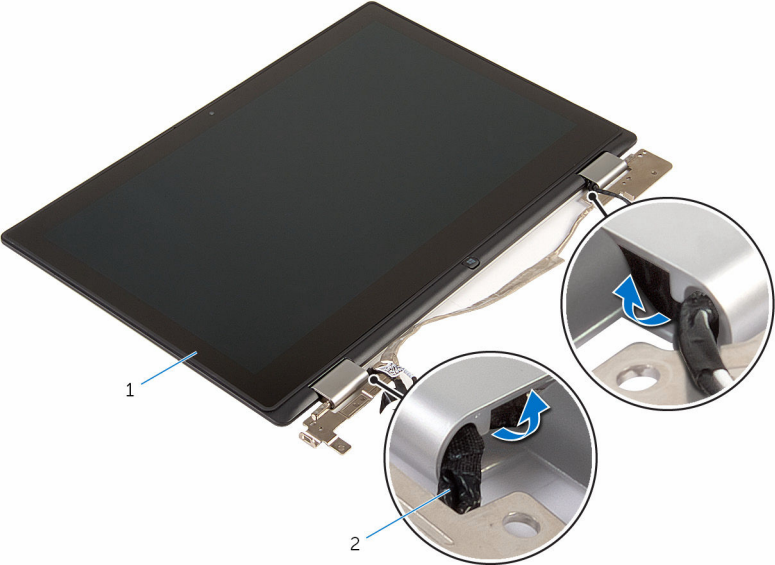
WARNING: Before working inside your computer, read the safety information that shipped with your computer and follow the steps in [Before working inside your computer](#). After working inside your computer, follow the instructions in [After working inside your computer](#). For more safety best practices, see the Regulatory Compliance home page at dell.com/regulatory_compliance.

Prerequisites

- 1 Remove the [base cover](#).
- 2 Remove the [battery](#).
- 3 Remove the [display assembly](#).

Procedure

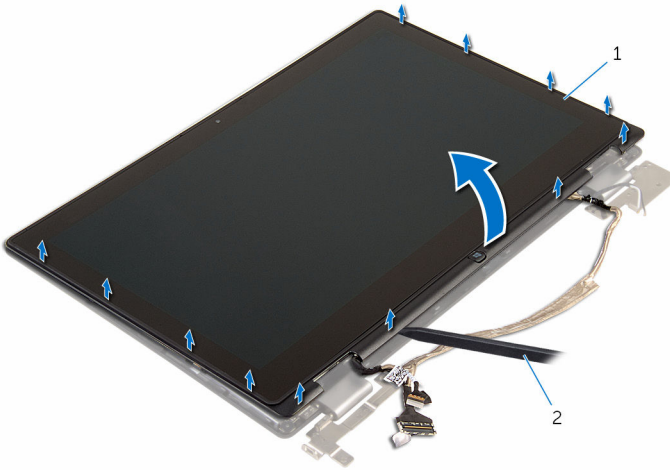
- 1 Remove the display cable from the routing guides inside the hinge covers.



1 display-panel assembly

2 display cable

- 2 Using a plastic scribe, pry the display-panel assembly off the display back-cover and antenna assembly.



1 display-panel assembly

2 plastic scribe

- 3 Remove the [camera](#).
- 4 Remove the [Windows-button board](#).

5 Place the display panel on a clean, flat surface.



1 display panel



Replacing the display panel



WARNING: Before working inside your computer, read the safety information that shipped with your computer and follow the steps in [Before working inside your computer](#). After working inside your computer, follow the instructions in [After working inside your computer](#). For more safety best practices, see the Regulatory Compliance home page at dell.com/regulatory_compliance.

Procedure

- 1 Place the display panel on a flat surface.
- 2 Replace the [Windows-button board](#).
- 3 Replace the [camera](#).
- 4 Route the display cable into the routing guides inside the hinge covers.
- 5 Align the display-panel assembly with the display back-cover and antenna assembly and gently snap the display back-cover and antenna assembly into place.

Post-requisites

- 1 Replace the [display assembly](#).
- 2 Replace the [battery](#).
- 3 Replace the [base cover](#).

Removing the display hinges



WARNING: Before working inside your computer, read the safety information that shipped with your computer and follow the steps in [Before working inside your computer](#). After working inside your computer, follow the instructions in [After working inside your computer](#). For more safety best practices, see the Regulatory Compliance home page at dell.com/regulatory_compliance.

Prerequisites

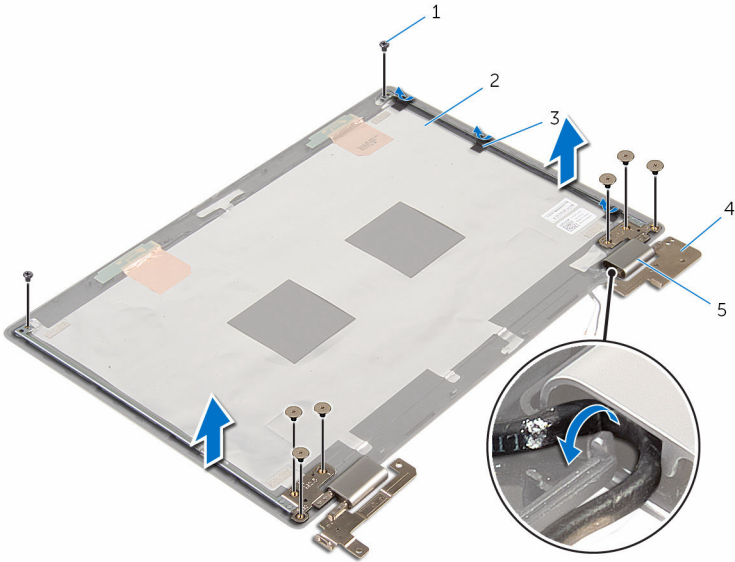
- 1 Remove the [base cover](#).
- 2 Remove the [battery](#).
- 3 Remove the [display assembly](#).
- 4 Follow the procedure from step 1 to step 2 in “Removing the [display panel](#)”.

Procedure

- 1 Place the display-back cover and antenna assembly on a flat surface.
- 2 Remove the antenna cables from the routing guide on the hinge cover.
- 3 Remove the screws that secure the display hinges to the display back-cover and antenna assembly.
- 4 Peel off the tapes that secure the display hinges to the display back-cover and antenna assembly.



- 5 Lift the display hinges off the display back-cover and antenna assembly.



1 screws (8)

2 display back-cover and antenna assembly

3 tapes (3)

4 display hinges (2)

5 hinge covers (2)

Replacing the display hinges



WARNING: Before working inside your computer, read the safety information that shipped with your computer and follow the steps in [Before working inside your computer](#). After working inside your computer, follow the instructions in [After working inside your computer](#). For more safety best practices, see the Regulatory Compliance home page at dell.com/regulatory_compliance.

Procedure

- 1 Place the display-back cover and antenna assembly on a flat surface.
- 2 Align the screw holes on the display hinges with the screw holes on the display back-cover and antenna assembly.
- 3 Replace the screws that secure the display hinges to the display back-cover and antenna assembly.
- 4 Adhere the tapes that secure the display hinges to the display back-cover and antenna assembly.
- 5 Route the antenna cables through the routing guide on the hinge cover and secure it in place.

Post-requisites

- 1 Follow the procedure from step 4 to step 5 in "Replacing the [display panel](#)".
- 2 Replace the [display assembly](#).
- 3 Replace the [battery](#).
- 4 Replace the [base cover](#).



Removing the display back-cover and antenna assembly



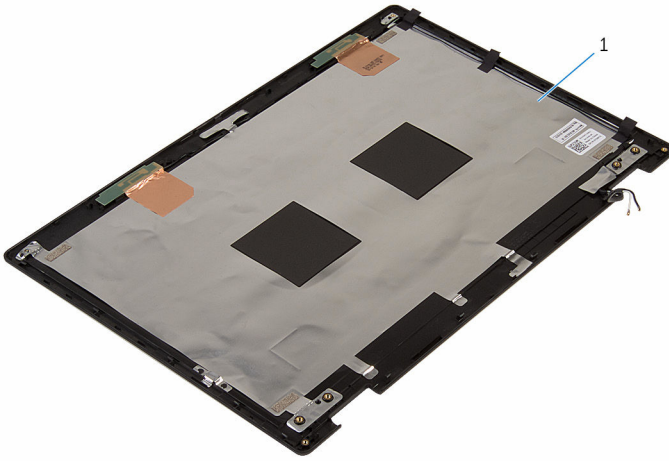
WARNING: Before working inside your computer, read the safety information that shipped with your computer and follow the steps in [Before working inside your computer](#). After working inside your computer, follow the instructions in [After working inside your computer](#). For more safety best practices, see the Regulatory Compliance home page at dell.com/regulatory_compliance.

Prerequisites

- 1 Remove the [base cover](#).
- 2 Remove the [battery](#).
- 3 Remove the [display assembly](#).
- 4 Remove the [display panel](#).
- 5 Remove the [display hinges](#).

Procedure

After performing the steps in prerequisites we are left with the display back-cover and antenna assembly.



- 1 display back-cover and antenna assembly

Replacing the display back-cover and antenna assembly



WARNING: Before working inside your computer, read the safety information that shipped with your computer and follow the steps in [Before working inside your computer](#). After working inside your computer, follow the instructions in [After working inside your computer](#). For more safety best practices, see the Regulatory Compliance home page at dell.com/regulatory_compliance.

Procedure

Place the display back-cover and antenna assembly on a flat surface.

Post-requisites

- 1 Replace the [display hinges](#).
- 2 Replace the [display panel](#).
- 3 Replace the [display assembly](#).
- 4 Replace the [battery](#).
- 5 Replace the [base cover](#).

Removing the camera



WARNING: Before working inside your computer, read the safety information that shipped with your computer and follow the steps in [Before working inside your computer](#). After working inside your computer, follow the instructions in [After working inside your computer](#). For more safety best practices, see the Regulatory Compliance home page at dell.com/regulatory_compliance.

Prerequisites

- 1 Remove the [base cover](#).
- 2 Remove the [battery](#).
- 3 Remove the [display assembly](#).
- 4 Follow the procedure from step 1 to step 2 in “Removing the [display panel](#)”.

Procedure

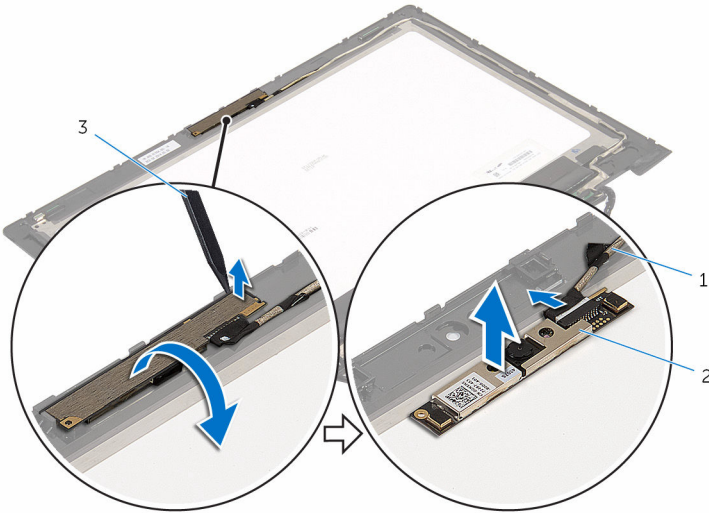


CAUTION: Place the display-panel assembly on a soft and clean surface to avoid scratching the display.

- 1 Place the display-panel assembly face down on a flat surface.
- 2 Using a plastic scribe, pry the camera module and turn it over.
- 3 Disconnect the camera cable from the camera module.



- 4 Lift the camera module off the display bezel.



- 1 camera cable
3 plastic scribe

- 2 camera

Replacing the camera



WARNING: Before working inside your computer, read the safety information that shipped with your computer and follow the steps in [Before working inside your computer](#). After working inside your computer, follow the instructions in [After working inside your computer](#). For more safety best practices, see the Regulatory Compliance home page at dell.com/regulatory_compliance.

Procedure

- 1 Connect the camera cable to the camera module.
- 2 Using the alignment post place the camera module on the display bezel and snap it into place.

Post-requisites

- 1 Follow the procedure from step 4 to step 5 in “Replacing the [display panel](#)”.
- 2 Replace the [display assembly](#).
- 3 Replace the [battery](#).
- 4 Replace the [base cover](#).



Removing the Windows-button board



WARNING: Before working inside your computer, read the safety information that shipped with your computer and follow the steps in [Before working inside your computer](#). After working inside your computer, follow the instructions in [After working inside your computer](#). For more safety best practices, see the Regulatory Compliance home page at dell.com/regulatory_compliance.

Prerequisites

- 1 Remove the [base cover](#).
- 2 Remove the [battery](#).
- 3 Remove the [display assembly](#).
- 4 Follow the procedure from step 1 to step 2 in “Removing the [display panel](#)”.

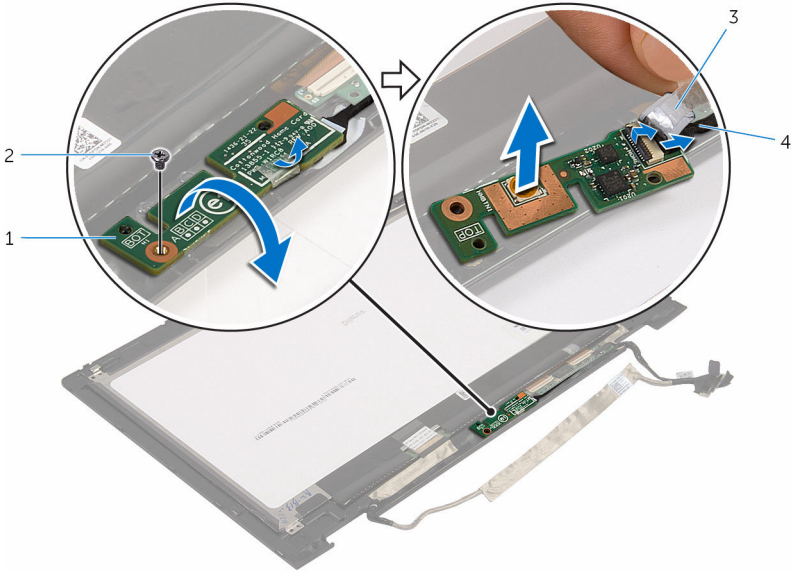
Procedure



CAUTION: Place the display-panel assembly on a soft and clean surface to avoid scratching the display.

- 1 Place the display-panel assembly face down on a flat surface.
- 2 Remove the screw that secures the Windows-button board to the display bezel.
- 3 Turn the Windows-button board over.
- 4 Peel off the tape from the connector on the Windows-button board.
- 5 Lift the latch and disconnect the Windows-button board cable from the Windows-button board.

6 Lift the Windows-button board off the display bezel.



1 Windows-button board

2 screw

3 tape

4 Windows-button board cable



Replacing the Windows-button board



WARNING: Before working inside your computer, read the safety information that shipped with your computer and follow the steps in [Before working inside your computer](#). After working inside your computer, follow the instructions in [After working inside your computer](#). For more safety best practices, see the Regulatory Compliance home page at dell.com/regulatory_compliance.

Procedure

- 1 Slide the Windows-button board cable into the connector on the Windows-button board and press down the latch to secure the cable.
- 2 Adhere the tape to the connector on the Windows-button board.
- 3 Turn the Windows-button board and align the screw hole on the Windows-button board with the screw hole on the display bezel.
- 4 Replace the screw that secures the Windows-button board to the display bezel.
- 5 Turn the display-panel assembly over.

Post-requisites

- 1 Follow the procedure from step 4 to step 5 in “Replacing the [display panel](#)”.
- 2 Replace the [display assembly](#).
- 3 Replace the [battery](#).
- 4 Replace the [base cover](#).

Removing the display cable



WARNING: Before working inside your computer, read the safety information that shipped with your computer and follow the steps in [Before working inside your computer](#). After working inside your computer, follow the instructions in [After working inside your computer](#). For more safety best practices, see the Regulatory Compliance home page at dell.com/regulatory_compliance.

Prerequisites

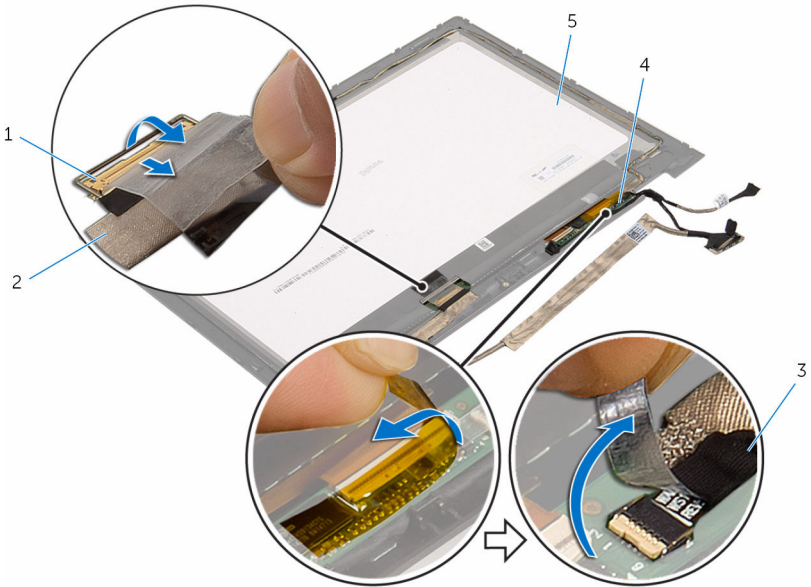
- 1 Remove the [base cover](#).
- 2 Remove the [battery](#).
- 3 Remove the [display assembly](#).
- 4 Follow the procedure from step 1 to step 2 in “Removing the [display panel](#)”.
- 5 Follow the procedure from step 1 to step 2 in “Removing the [camera](#)”.
- 6 Remove the [Windows-button board](#).

Procedure

- 1 Peel off the tape, lift the latch and disconnect the display cable from the display panel.



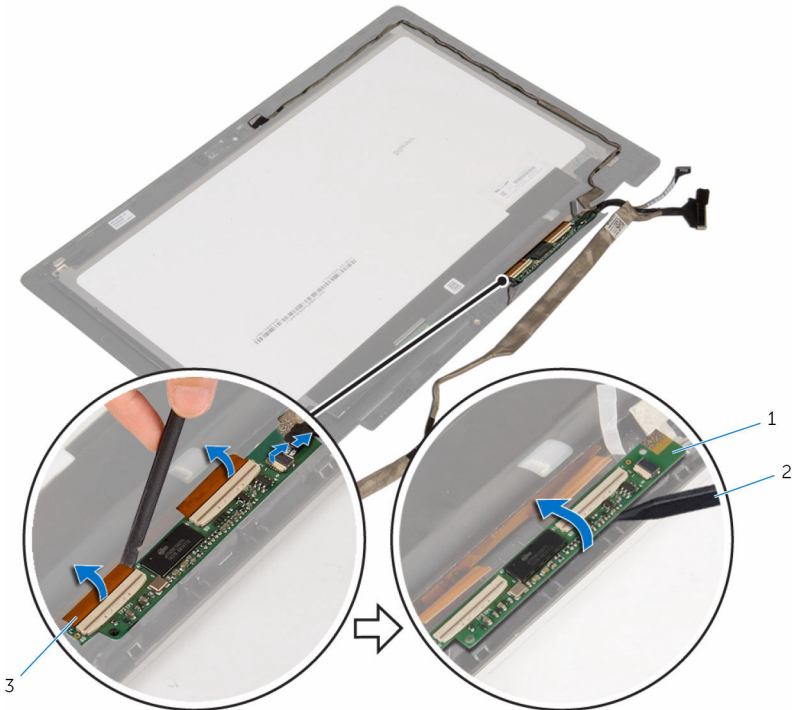
- 2** Peel off the tapes from the touch-screen board and the touch-screen board cable.



- | | | | |
|---|--------------------------|---|--------------------|
| 1 | latch | 2 | display cable |
| 3 | touch-screen board cable | 4 | touch-screen board |
| 5 | display panel | | |

- 3** Disconnect the touch-screen board cables from the touch-screen board.

- 4 Using a plastic scribe, peel off the touch-screen board from the display bezel.



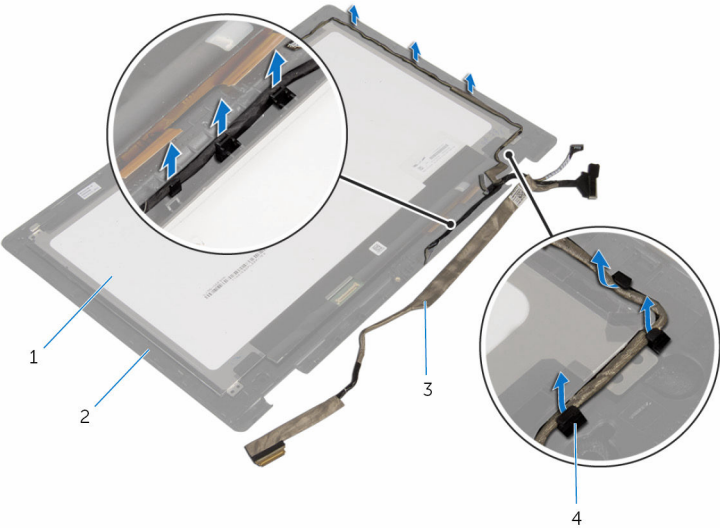
1 touch-screen board

2 plastic scribe

3 touch-screen board cables (3)

- 5 Note the display cable routing and remove the display cable from the routing guides on the display bezel.

6 Lift the display cable off the display bezel.



- 1 display panel
- 3 display cable

- 2 display bezel
- 4 routing guides



Replacing the display cable



WARNING: Before working inside your computer, read the safety information that shipped with your computer and follow the steps in [Before working inside your computer](#). After working inside your computer, follow the instructions in [After working inside your computer](#). For more safety best practices, see the [Regulatory Compliance home page at dell.com/regulatory_compliance](#).

Procedure

- 1 Route the display cable through the routing guides on the display bezel.
- 2 Adhere the touch-screen board to the display bezel.
- 3 Connect the touch-screen board cables to the touch-screen board.
- 4 Adhere the tapes to the touch-screen board cable and the touch-screen board.
- 5 Slide the display cable into the connector on the display panel and press down the latch to secure the cable.



Post-requisites

- 1 Replace the [Windows-button board](#).
- 2 Follow the procedure from step 1 to step 2 in “Replacing the [camera](#)”.
- 3 Follow the procedure from step 4 to step 5 in “Replacing the [display panel](#)”.
- 4 Replace the [display assembly](#).
- 5 Replace the [battery](#).
- 6 Replace the [base cover](#).



Flashing the BIOS

You may need to flash (update) the BIOS when an update is available or when you replace the system board. To flash the BIOS:

- 1 Turn on the computer.
- 2 Go to **dell.com/support**.
- 3 Click **Product Support**, enter the Service Tag of your laptop and click **Submit**.
 **NOTE: If you do not have the Service Tag, use the auto-detect feature or manually browse for your computer model.**
- 4 Click **Drivers & downloads**.
- 5 Scroll down to **Or, show me all available drivers for ...** and select **BIOS** from the **Category** drop-down list.
 **NOTE: In the Change OS drop-down list, select the operating system installed on your computer.**
- 6 Expand **BIOS** to view the available BIOS files.
- 7 Click **Download File** to download the latest version of the BIOS for your computer.
- 8 Save the file and once the download is complete, navigate to the folder where you saved the BIOS update file.
- 9 Double-click the BIOS update file icon and follow the instructions on the screen.

Getting help and contacting Dell

Self-help resources

You can get information and help on Dell products and services using these online self-help resources:

Self-Help Information	Self-Help Options
Accessing Windows Help	Windows 8.1 —Open the Search charm, type Help and Support in the search box and press Enter . Windows 7 —Click Start → Help and Support .
Information about Dell products and services	See dell.com .
Troubleshooting information, user manuals, setup instructions, product specifications, technical help blogs, drivers, software updates, and so on	See dell.com/support .
Information about Microsoft Windows 8.1	See dell.com/windows8 .
Information about Microsoft Windows 7	Click Start → All Programs → Dell Help Documentation .
Learn about your operating system, setting up and using your computer, data backup, diagnostics, and so on.	See <i>Me and My Dell</i> at dell.com/support/manuals .

Contacting Dell

To contact Dell for sales, technical support, or customer service issues, see **dell.com/contactdell**.



NOTE: Availability varies by country and product, and some services may not be available in your country.





NOTE: If you do not have an active internet connection, you can find contact information on your purchase invoice, packing slip, bill, or Dell product catalog.